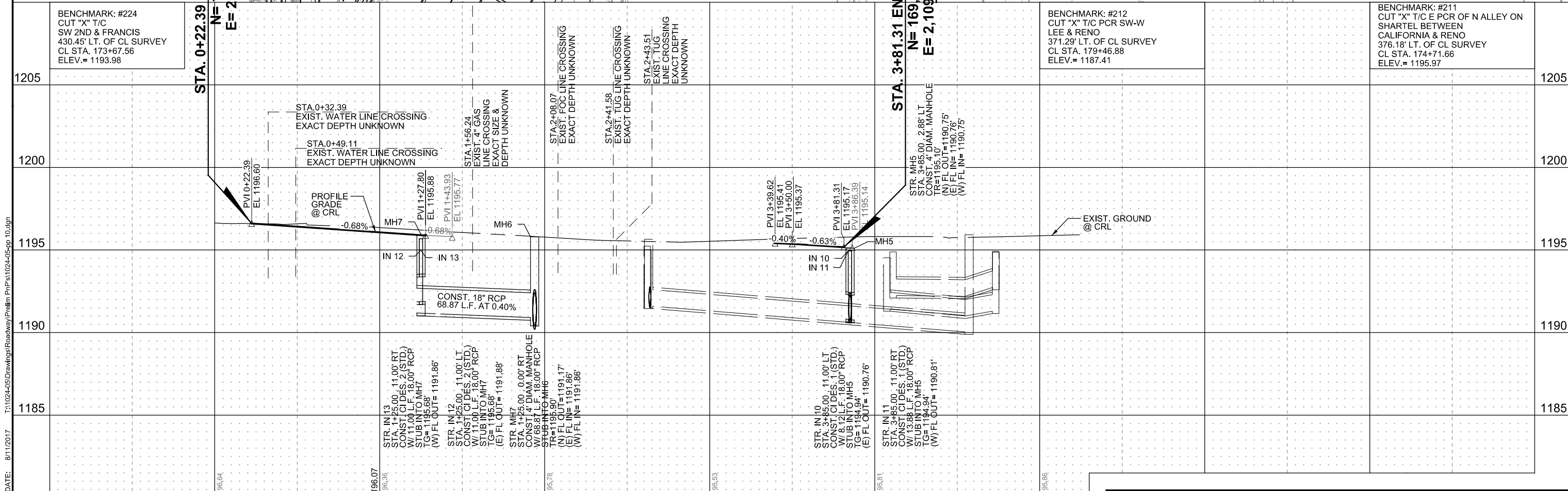


NOTE:  
FIBER OPTICS AT 8.5'  
CONTACT INDIAN NATION OPTICS  
JIM SITLER (901) 605-5610  
PRIOR TO EXCAVATION



BENCHMARK: #224  
CUT "X" T/C  
SW 2ND & FRANCIS  
430.45' LT. OF CL SURVEY  
CL STA. 173+67.56  
ELEV. = 1193.98

BENCHMARK: #212  
CUT "X" T/C PCR SW-W  
LEE & RENO  
371.29' LT. OF CL SURVEY  
CL STA. 179+46.88  
ELEV. = 1187.41

BENCHMARK: #211  
CUT "X" T/C E PCR OF N ALLEY ON  
SHARTEL BETWEEN  
CALIFORNIA & RENO  
376.18' LT. OF CL SURVEY  
CL STA. 174+71.66  
ELEV. = 1195.97

STA. 0+22.39 BEGIN SHARTEL AVE.  
N = 168,926.6942  
E = 2,109,742.5173

CRL STA. 0+55.35  
S. SHARTEL AVE. =  
CRL STA. 9+60.63  
SW 2nd STREET  
N = 168,959.6676  
E = 2,109,742.4559

SEC. 4, T-11-N, R-3-W  
CRL STA. 2+41.70  
S. SHARTEL AVE. =  
CRL STA. 176+70.09  
OKLAHOMA CITY BLVD  
N = 169,146.0113  
E = 2,109,742.1088

CRL STA. 4+38.93  
S. SHARTEL AVE. =  
CRL STA. 25+95.98  
W. RENO AVE.  
N = 169,343.2396  
E = 2,109,741.7414

STA. 3+81.31 END SHARTEL AVE.  
N = 169,285.6262  
E = 2,109,741.8487

PRINT DATE: 8/11/2017 T:\1024-05\Drawings\Roadway\Prelim\Prn\Ps\1024-05-pp-10.dgn